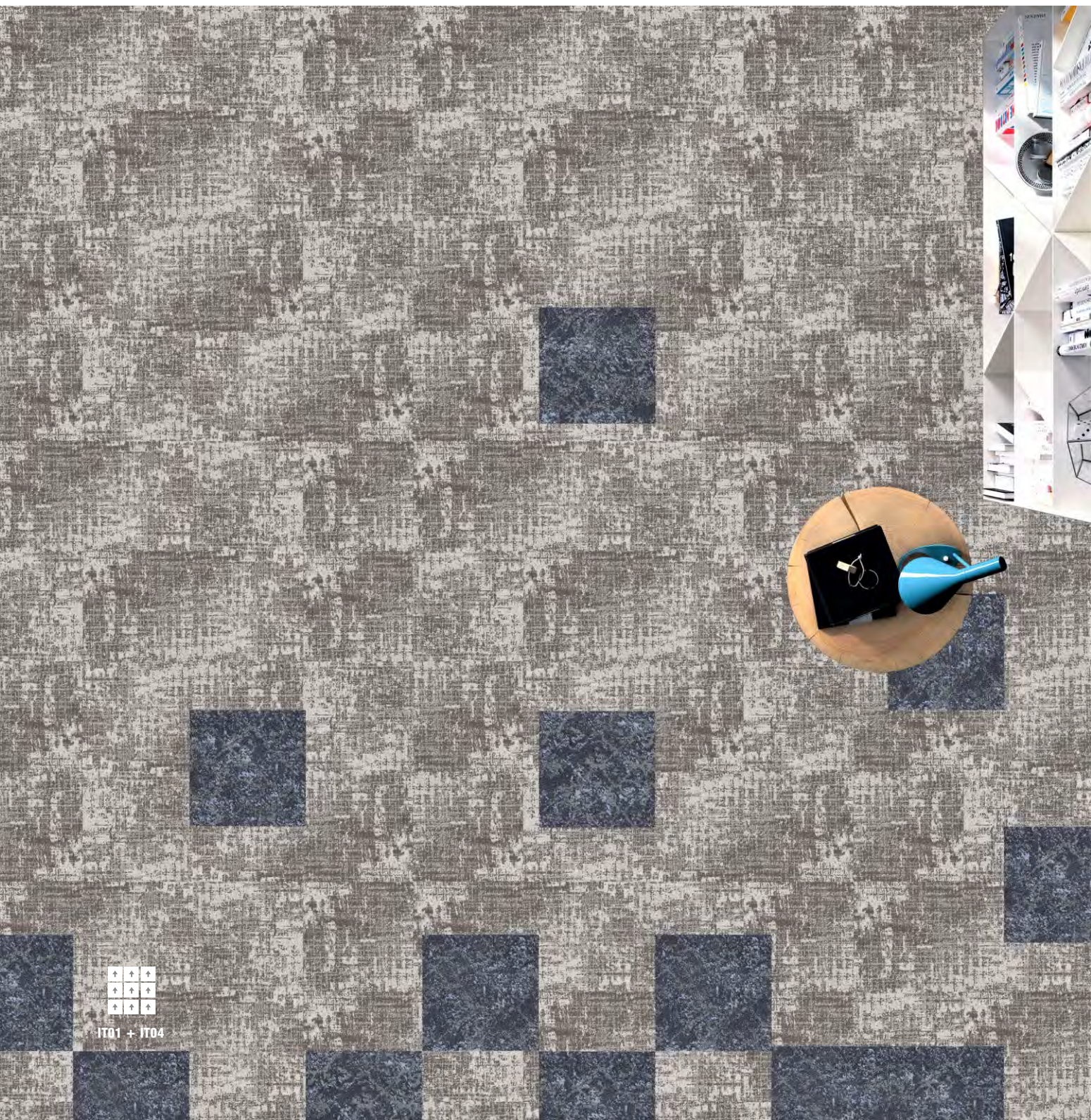


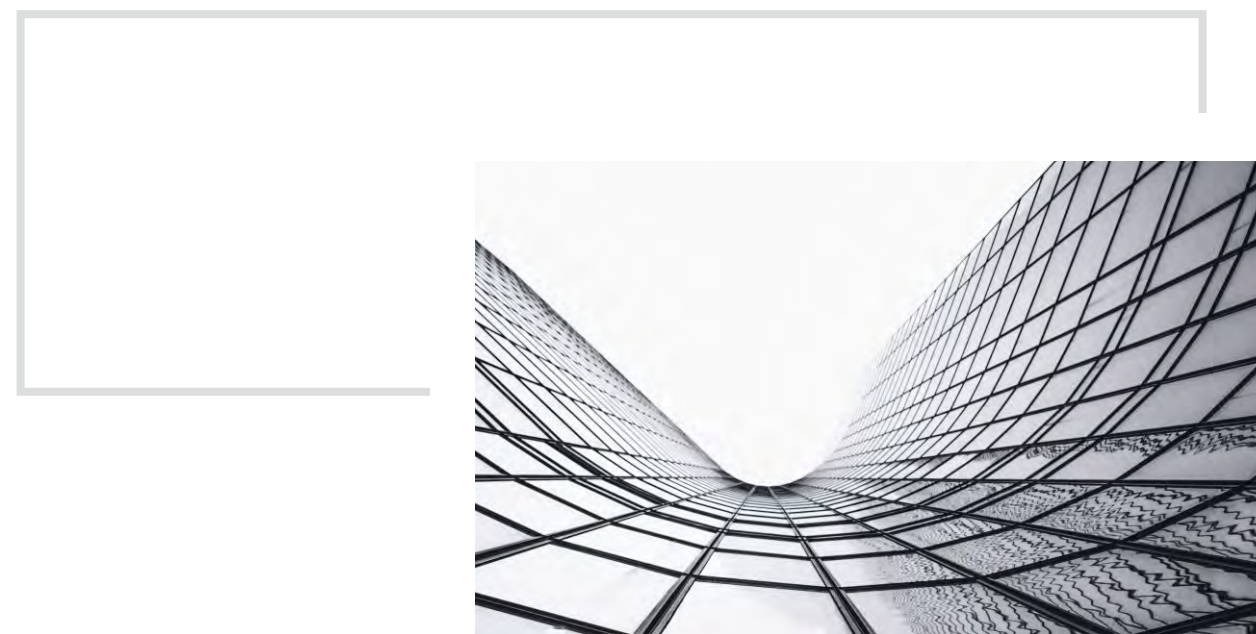


THE INTERLACE
LUXURY STYLE

THE INTERLACE LUXURY STYLE ONE INSPIRATION



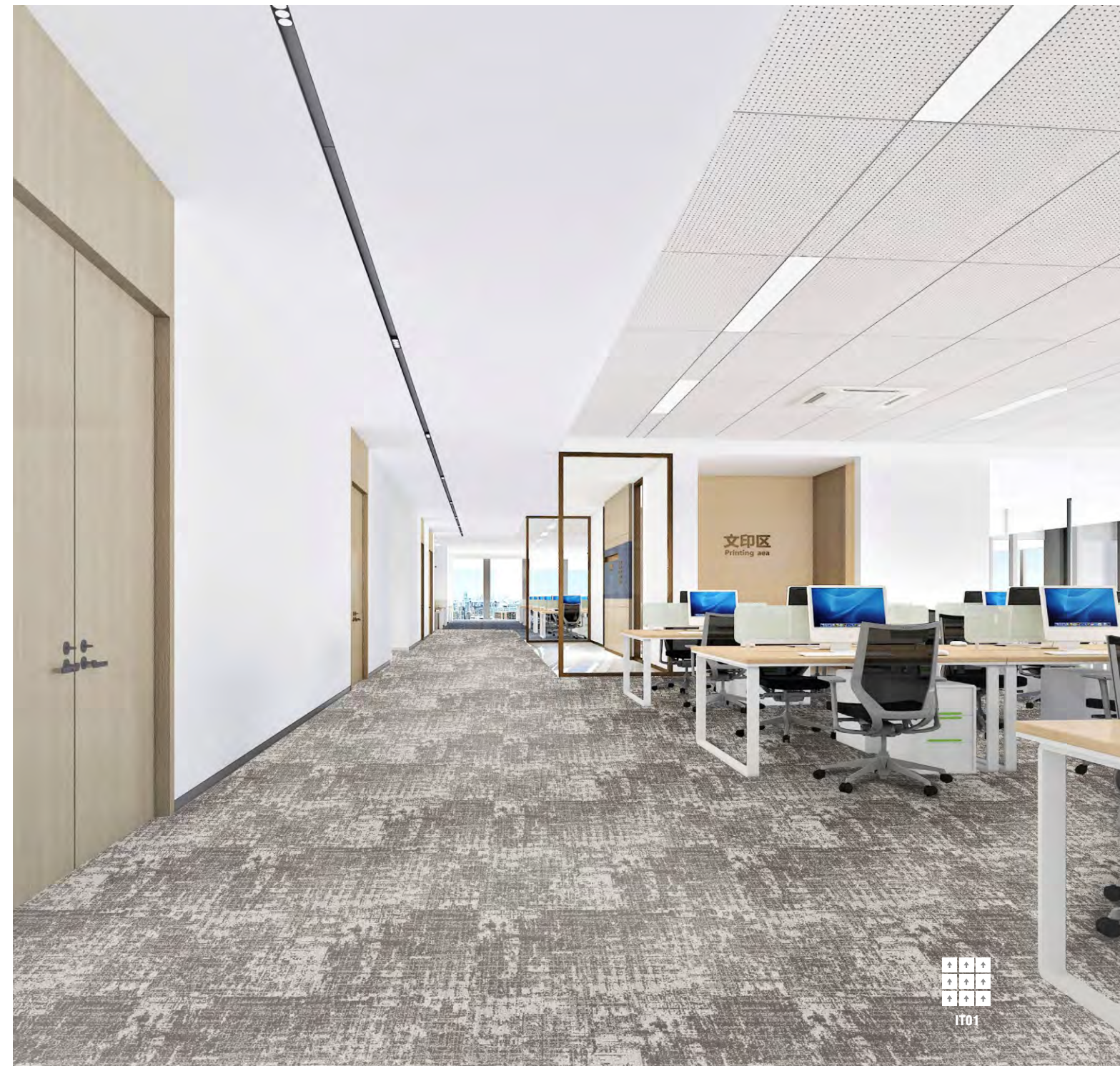
Our carpet design is inspired
by the definition of interlace-
merge, twist, join, mix, alternate,
interweave and knit



Art in its broadest sense,
is a form of communication.
Besides expressing feelings, thoughts and
observations.
Artist also articulate them with the

A BEAUTY,
NO ONE CAN COMPREHEND

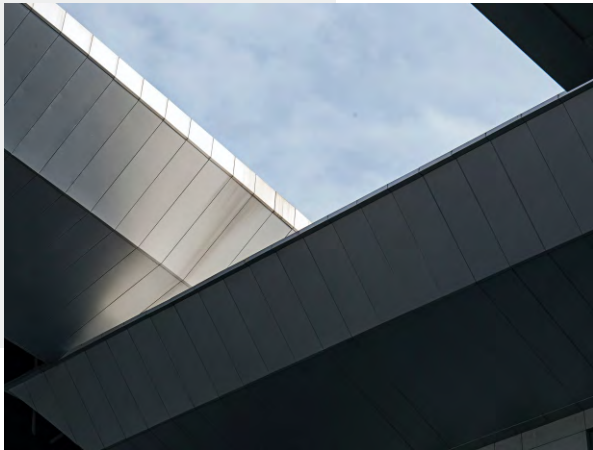
DESIGN INSPIRATION,
The abstract arrangement
of lines, structures, proportions
and forms epitomise thoughts



Art Director Paul Rand once said

“It is only by association with a product, a service, a business or a corporation that a design takes on any real meaning. It derives its meaning and usefulness from the quality of that which it symbolizes”.

**An immense
experience
like
never
before**



IT01 + IT04



Luxury is a state of
great comfort and



PROMOTING A HIGHER
STANDARD OF
LIVING



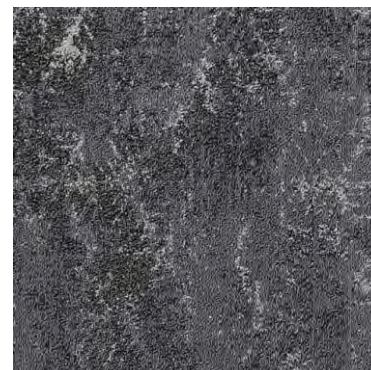
IT03 + IT04



THE INTERLACE - Luxury Style



STYLE MELODY IT01



STYLE CRYSTAL IT03

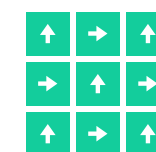


STYLE FLORA IT04

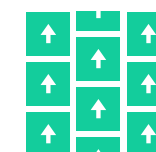
SPECIFICATIONS

STYLE NAME:	THE INTERLACE- Luxury Style
CONSTRUCTION:	Multi-color Jacquard Tiles
YARN:	100% Universal Nylon
DYED METHOD:	100% Solution Dyed
GAUGE:	1/10"
PILE HEIGHT:	4-5mm ± 0.5mm
TOTAL THICKNESS:	9 ± 0.5mm
PILE WEIGHT	29 oz/yd ²
BACKING:	PVC with Glass Fiber
PRIMARY BACKING CLOTH:	Non-woven Polyester Spunbonded
YARN TREATMENTS:	3M Scotchgard Permanently Anti Static
ANTI-SOIL & OIL TREATMENT:	3M Scotchgard
TILE SIZE:	50cm x 50cm
PACKING:	16 PCS
RADIANT PANEL:	Passes (ASTM E 648) Class 1
SMOKE DENSITY:	Passes (ASTM E 662) less than 450
STATIC PROPENSITY:	Passes (AATCC-134) less than 3.5 kv
SINGAPORE GREEN LABEL:	039-025-2280
WARRANTY:	10-Year Carpet Wear Warranty

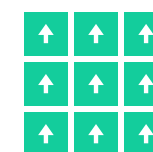
RECOMMENDED INSTALLATION METHODS:



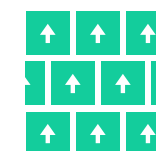
QUARTER-TURN



ASHLAR



MONOLITHIC



BRICK

AS IN ALL QUALITY CARPETS, COLOURS ARE SUBJECT TO DYELOT VARIATIONS.

The product images shown are for illustration purpose only and may not be an exact representation of the product.



IT04

